

Architect: Brad Lewis, director of design,
Bill Schwarz, Schwarz Lewis Design Group,
Inc., 2 Mid America plaza, Suite 831,
Oakbrook terrace, IL 60181 : 630/873-3508

American *Classic*

Elegant millwork and
furniturelike details
imbue a new kitchen
with the spirit of a
historic home.

BY MARGARET ZAINÉY ROUX | PHOTOS WERNER STRAUBE
FIELD EDITOR MEGAN CHAFFIN

Situating the grand window cornice and range hood on adjacent walls encourages the eye to move around the room rather than land on a single focal point.





“The most important thing a designer can do for his clients is to help give their new home an old soul,” interior designer Jeff Jones says. Jones and builder Jay Riordan did just that when they collaborated on Jennifer and Dominic Data’s Pennsylvania Dutch-style home in Western Springs, Illinois.

“The Datas have a deep appreciation for character and authenticity,” Jones says. “They’re a young couple, but they revere traditional American design, so we turned to history for inspiration in the kitchen. The gray-green color we chose for the walls is similar to one that was popular in Colonial times but has since been tweaked to become more compatible with today’s decor. Soft white trim brightens the room and highlights the exquisite custom cabinetry and millwork that recall the simple elegance of an Early American home.”

In an era when built-ins have replaced the cupboards and sideboards of bygone days, the Datas sought cabinetry that would marry old-fashioned form with modern-day function. To achieve this, Riordan designed units to exude a furniturelike feel yet provide all the conveniences of contemporary cabinetry. Base cabinets feature raised panels and baluster-style columns that disguise amenities including the microwave, espresso machine, and water



Opposite: Builder Jay Riordan went above and beyond custom panels to camouflage the refrigerator. He also flanked it with glass-front cabinets and topped the entire unit with crown molding to create an armoire-like effect. **Above:** A porcelain farm sink and polished-nickel bridge faucet add to the kitchen’s classically chic vibe.

“Soft white trim brightens the room and highlights the exquisite custom cabinetry and millwork.”

Jeff Jones
designer



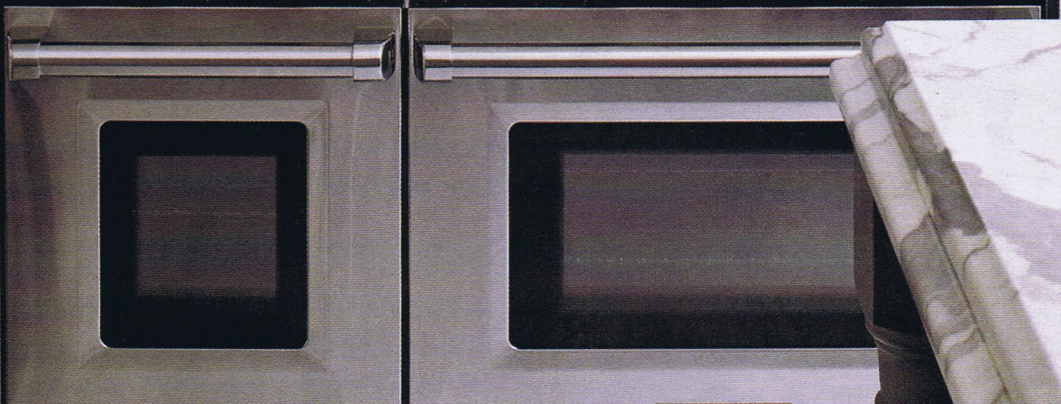
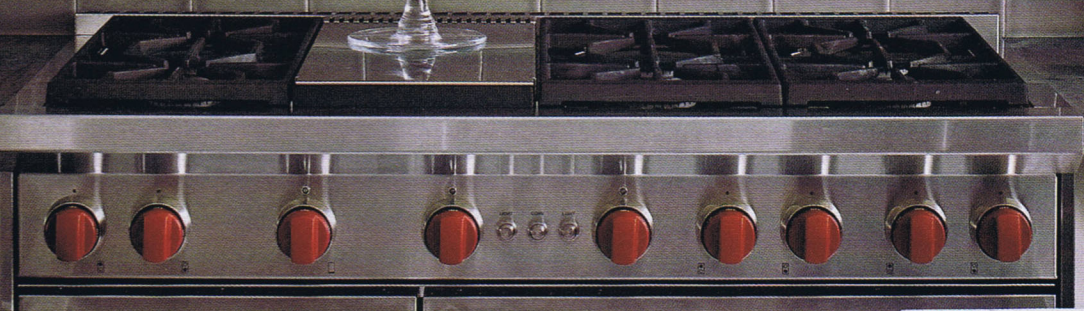
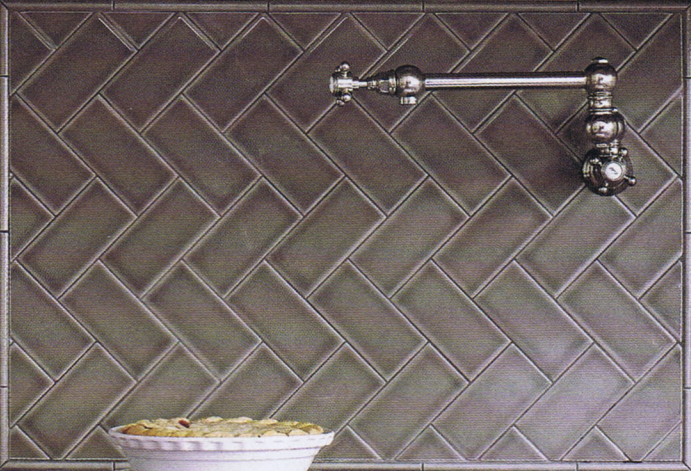
Above: “It was a miracle to have found such a perfect slab,” interior designer Jeff Jones says of the island’s Calacatta Gold marble countertop. “The veining is just the right shade of gray and introduces an organic element into the room.” **Right:** For multitasking mom Jennifer Data, the small chef’s office off the kitchen was a “must-have” for organization and extra storage. **Opposite:** Hand-glazed with a custom crackle finish, the porcelain subway tiles and herringbone-pattern inset on the backsplash support the monochromatic color scheme while adding visual and tactile interest.

filtration system. Upper cabinets store and display cherished pewter and pottery collections behind glass fronts with gently curved muntins styled to mimic the sidelights flanking a Federal-style front door. At the heart of the space is the gracious gray island, used for food prep and serving as well as lunches on the go. The branchlike veining of its Calacatta Gold countertop plays off the woodland views visible from the adjoining breakfast room. But the real crown jewels of this kitchen are the wooden clipped-corner cornice that reigns above the perimeter windows and farm sink and the stately mantel-style hood that tops the 60-inch range.

“Every kitchen must have a sink and a stove, but the artisanal details of the cornice and range hood command all the attention and deflect from the utilitarian components beneath them,” Jones says. “Centuries ago, kitchens didn’t have professional-grade appliances or fancy storage options. But they did have wainscoting, moldings, and various trims, all handcrafted from honest materials. The Data kitchen has both—making it perfectly suited for today and for tomorrow, and for another 10 years from now. It truly defines what it means to be classic.”

RESOURCES BEGIN ON PAGE 122.







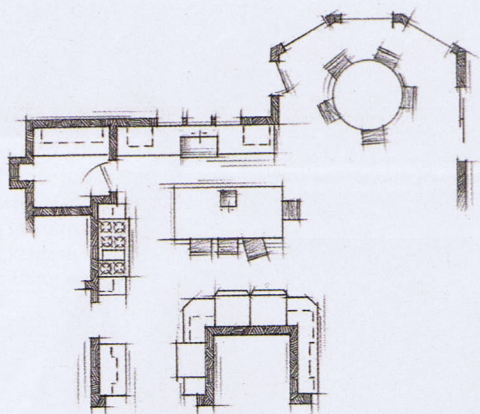
DESIGNER INSIGHTS

Meticulous Millwork

Builder Jay Riordan offers tips for taking trim to the next level.

- **Use an artistic approach.** View millwork as art—it's an investment that can elevate a room from ordinary to extraordinary and can complete your customized look.
- **Go with the flow.** Keep the scale and tone of millwork consistent throughout the kitchen and adjoining rooms for a cohesive look. If you're renovating an older home, take cues from the original architecture when it comes to selecting trim.
- **Finish strong.** Look beyond the aesthetics. High-quality materials, knowledgeable craftspeople, and experienced installers can be the difference between building your dream kitchen and creating a design disaster.

Left: Custom cabinetry makes the most of a small space between the refrigerator and the beverage center. **Below:** The beverage center includes a microwave and coffeemaker that hide behind doors when not in use. **Opposite:** The octagon-shaped breakfast room is designed to capture natural light and woodland views from multiple vantage points. Its unique coffered ceiling boasts richly stained V-groove paneling.





For further information about products or professionals featured in *Beautiful Kitchens & Baths™* magazine, please contact these sources. Addresses and phone numbers have been verified, but we cannot guarantee availability of items or services.



AMERICAN CLASSIC

PAGES 34-41

Architect: Brad Lewis, director of design, Bill Schwarz, Schwarz Lewis Design Group, Inc., 2 Mid America Plaza, Suite 831, Oakbrook Terrace, IL 60181; 630/873-3508; schwarzlewis.com.

Interior designer: Jeff R. Jones, Life Design, Chicago and Palm Springs, California; 630/674-8020; lifedesignllc.com; email: lifedesign@comcast.net.

Builder: Jay Riordan, president, Riordan Signature Homes, P.O. Box 119, Western Springs, IL 60558; 708/783-1133; riordanhomes.com.

Millwork, flooring, perimeter cabinetry custom in Maritime White finish, **perimeter countertop** soapstone by Primus Natural Stone, **island cabinet** custom, **island countertop** Calacatta Gold marble—Riordan Signature Homes, Western Springs, Illinois; 708/783-1133; riordanhomes.com.

Paint for island Squirrel Tail—Benjamin Moore; 888/236-6667; benjaminmoore.com

[P]. **Tile for backsplash** Bella Vita, **office chair** vintage, **dining table** Drexel Heritage, **fabrication of window treatment** Jay Taylor, **fabric for window treatment** Robert Allen, discontinued—through Life Design, Chicago and Palm Springs, California; 630/674-8020; lifedesignllc.com.

Pendant lighting at island—Hudson Valley Lighting, Inc.; hudsonvalleylighting.com.

Perimeter sink Whitehaven #K6489-0—Kohler Co.; 800/456-4537; us.kohler.com. **Perimeter sink faucet** #RU4719LPN2 in polished nickel, **soap dispenser** Perrin & Rowe soap and lotion dispenser #RLS850PAPC in polished nickel—Rohti; 800/777-9762; rohthome.com.

Prep sink at island #EELG151WHO—Elkay; elkayusa.com. **Faucet at prep sink** Bar Faucet #N8081 in polished nickel—Newport Brass; newportbrass.com.

Range—Wolf Appliance, Inc.; 800/332-9513; subzero-wolf.com. **Microwave oven**—Panasonic USA; 800/211-7262; panasonic.com. **Counter-height chairs, chairs at table**—Restoration Hardware; 800/910-9836; restorationhardware.com.

Coffeemaker—Miele, Inc.; 800/463-0260; mieleusa.com.

Key

[T] To the Trade. Not available to the general public. Contact a design professional for help.
[P] Paint Color. Paint colors depicted might vary from manufacturers' colors. Use names or numbers as a starting point. To get the exact color you see, take the page to a paint retailer.